



**INSPIRING QUALITY.  
EVERYTIME. EVERYWHERE.**

## **Company Profile**

September 2024

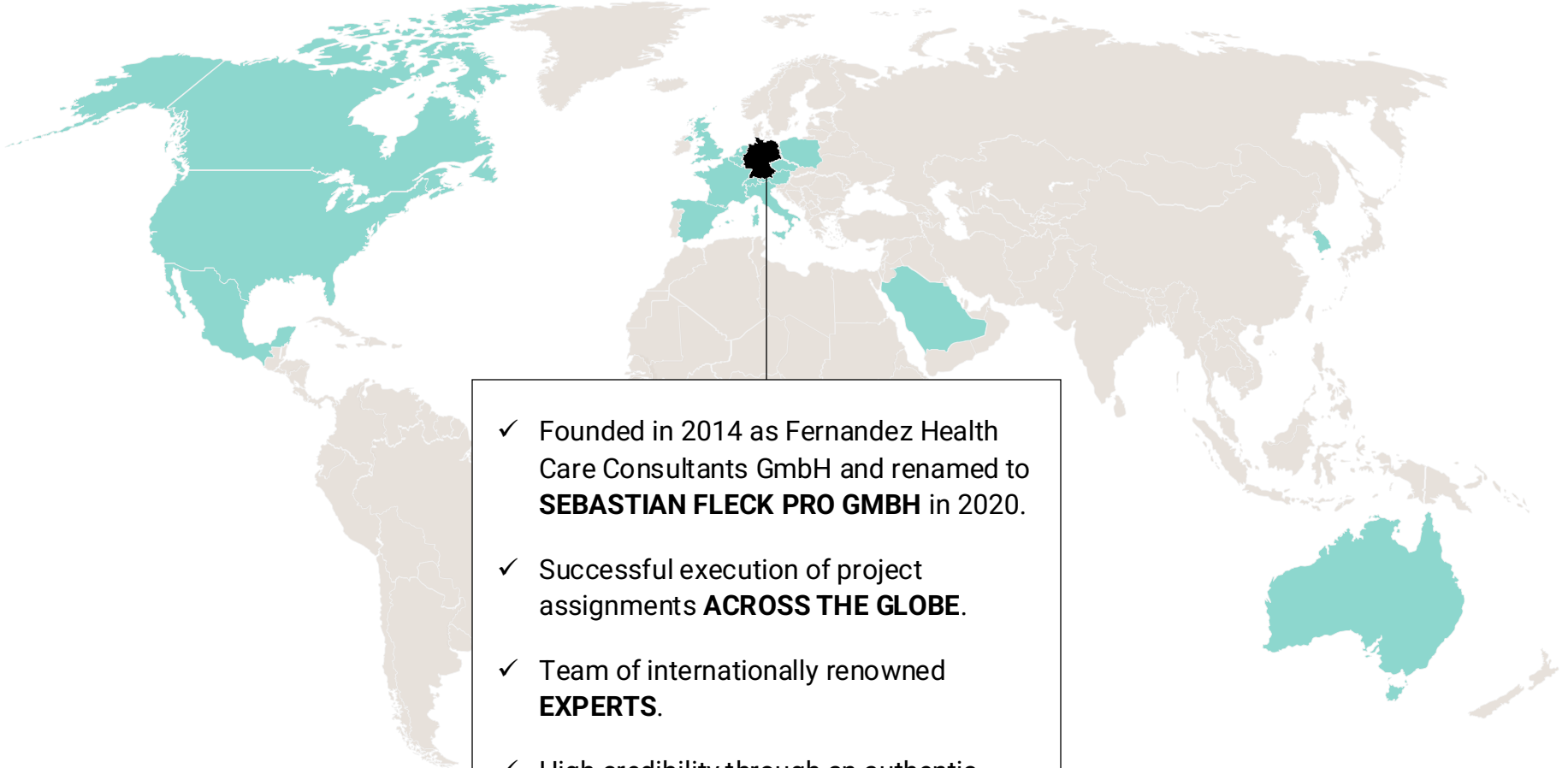


## OUR MISSION

**“We inspire our clients to achieve the highest quality in everything they do. Everytime. Everywhere.”**

Sebastian Fleck

## COMPANY OVERVIEW



- ✓ Founded in 2014 as Fernandez Health Care Consultants GmbH and renamed to **SEBASTIAN FLECK PRO GMBH** in 2020.
- ✓ Successful execution of project assignments **ACROSS THE GLOBE.**
- ✓ Team of internationally renowned **EXPERTS.**
- ✓ High credibility through an authentic **SERVICE PORTFOLIO.**

**LEGEND:**  
Green highlighted countries  
represent assignment locations.

## OUR SERVICE PORTFOLIO

### QUALITY MANAGEMENT

Our consulting services focus on:

- improving the robustness of your quality management system.
- preparing your next GMP audit or health authority inspection.
- the efficient and on-time processing of quality records.
- performing effectiveness checks of your improvement actions.

### BUSINESS TRANSFORMATION

Our experts support you in:

- sustainably further developing your company.
- developing the roadmap required for implementing your strategy.
- implementing the defined projects and initiatives.
- sparring your decision-makers in complex situations.



### CORPORATE MANAGEMENT

We share our expertise in:

- implementating effective corporate management systems.
- further developing existing structures and reporting processes.
- developing short-, mid-, and long-term growth opportunities.
- economically evaluating possible business development scenarios.

### LEADERSHIP DEVELOPMENT

We leverage our qualities through:

- further developing your employees' leadership skills.
- strengthening connections between your employees.
- resolving blockages and performance descriptions in your organisation.
- cultivating a healthy and sustainable work culture.

## SELECTED SUCCESS STORIES

---

### QUALITY MANAGEMENT

Develop and manage the multi-year-  
Inspection Preparation Project for a  
Biopharmaceuticals Contract  
Manufacturing Organisation to obtain  
the GMP certificate.



### BUSINESS TRANSFORMATION

Manage the Transformation Program for a  
Leader in Generics and Biosimilars  
Manufacturing with focus on upgrading  
the Production Facilities and restructuring  
the Operations organisation.



### CORPORATE MANAGEMENT

Upgrade the financial consolidation  
method and implement an enhanced  
management reporting process for a  
global specialist in immunology and  
hematology.



### LEADERSHIP DEVELOPMENT

Set up and manage the Change  
Management program for a global leader  
in sterile and non-sterile API's (two sites)  
including the implementation of a global  
leadership program.



## OUR EXPERT TEAM



### PROJECT MANAGEMENT EXPERT

Project Management ●●●●●  
 Problem-solving ●●●●●  
 Coaching/Mentoring ●●●●●  
 People Management ●●●●○

Pharma ●●●●●  
 Biotech ●●●●○  
 Chemicals ●●●●○  
 Other ●●●○

German ●●●●●  
 English ●●●●●  
 Spanish ●●●●○  
 Other ●●●○



### COMPLIANCE EXPERT

Project Management ●●●○  
 Problem-solving ●●●●●  
 Coaching/Mentoring ●●●○  
 People Management ●●●○

Pharma ●●●●●  
 Biotech ●●●○  
 Chemicals ●●●○  
 Other ●●●○

German ●●●●○  
 English ●●●●●  
 Spanish ●●○○  
 Other ●●●●●



### CORPORATE MANAGEMENT EXPERT

Project Management ●●●○  
 Problem-solving ●●●●●  
 Coaching/Mentoring ●●●●●  
 People Management ●●●●●

Pharma ●●●●●  
 Biotech ●●●○  
 Chemicals ●●●○  
 Other ●●●○

German ●●●●●  
 English ●●●●●  
 Spanish ●●●●○  
 Other ○○○○

## OUR EXPERT TEAM



### LEADERSHIP DEVELOPMENT & COACHING EXPERT

Project Management ●●○○○  
 Problem-solving ●●●●●  
 Coaching/Mentoring ●●●●●  
 People Management ●●●●●

Pharma ●●●○○  
 Biotech ●●○○○  
 Chemicals ●●●○○  
 Other ●●●●●

German ●●●●○  
 English ●●●●●  
 Spanish ○○○○○  
 Other ●●●●●



### CONTROLLING EXPERT

Project Management ●●●●●  
 Problem-solving ●●●●●  
 Coaching/Mentoring ●●●○○  
 People Management ●●●●○

Pharma ●●●●●  
 Biotech ●●●○○  
 Chemicals ●●●●○  
 Other ●●●○○

German ●●●●●  
 English ●●●●○  
 Spanish ○○○○○  
 Other ○○○○○



### BUSINESS DEVELOPMENT & QUALITY MANAGEMENT EXPERT

Project Management ●●●●○  
 Problem-solving ●●●●●  
 Coaching/Mentoring ●●●●●  
 People Management ●●●●●

Pharma ●●●●●  
 Biotech ●●●●●  
 Chemicals ●●●○○  
 Other ●●●○○

German ●●●●●  
 English ●●●●●  
 Spanish ●●●●○  
 Other ●●●●○

## OUR EXPERT TEAM

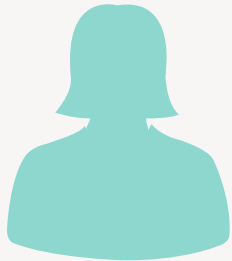


### SCIENCE & TECHNOLOGY EXPERT

Project Management ●●●●○  
 Problem-solving ●●●●○  
 Coaching/Mentoring ●●●●○  
 People Management ●●●●○

Pharma ●●●●●  
 Biotech ●●●●●  
 Chemicals ●●●●●  
 Other ●●○○○

German ●●●●●  
 English ●●●●●  
 Spanish ●●○○○  
 Other ○○○○○



### REGULATORY EXPERT

Project Management ●●●●○  
 Problem-solving ●●●○○  
 Coaching/Mentoring ●●●○○  
 People Management ●●●○○

Pharma ●●●●●  
 Biotech ●●●○○  
 Chemicals ●●●●○  
 Other ●●●○○

German ●●●●●  
 English ●●●○○  
 Spanish ○○○○○  
 Other ○○○○○



### LEAN MANAGEMENT EXPERT

Project Management ●●●●●  
 Problem-solving ●●●●●  
 Coaching/Mentoring ●●●●○  
 People Management ●●●●●

Pharma ●●●●●  
 Biotech ●●●○○  
 Chemicals ●●●○○  
 Other ●●●○○

German ●●●●●  
 English ●●●●○  
 Spanish ●●●○○  
 Other ●●○○○



## CONTACT DETAILS

---



**Sebastian Fleck**  
Managing Director